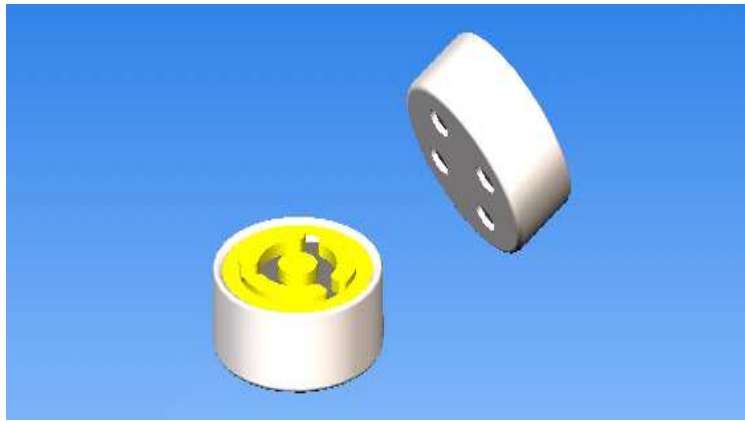


PAGE NO.	Dimension(mm)	Parts Number	Polar Pattern		Connection type			Standard testing condition	Sensitivity (dB)	Built-in electric capacity
			Omnidirection	Unidirection	SMD	Soldering Type	Pin Type			
1	φ3.0×1.2	TSS-3012E	◎		◎			2.0V,2.2KΩ	-39 ~ -49	2Cap.
2	φ4.0×1.3	TSS-4012E	◎		◎			2.0V,2.2KΩ	-39 ~ -49	2Cap.

TSS-3012E

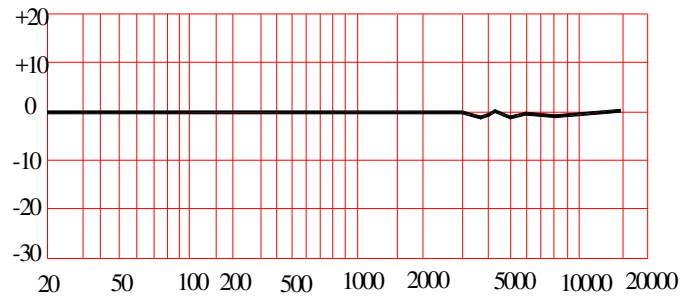
Omnidirectional Back Electret Condenser Microphone



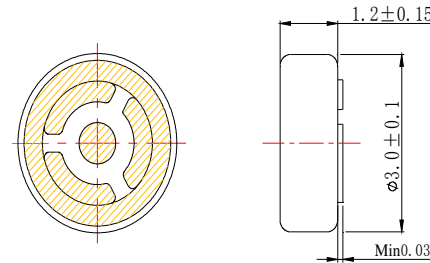
Sensitivity(1KHZ,0dB=1V/Pa)

X:-46±3dB
Y:-44±3dB
Z:-42±3dB

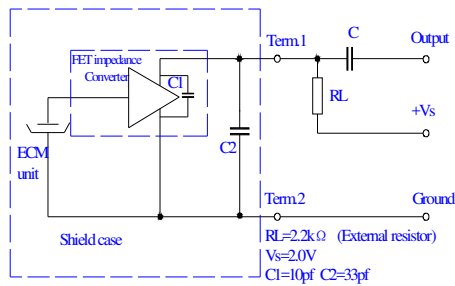
Frequency Response Curve



Dimensional(mm)



Schematic Diagram(Vs=2.0,RL=2.2kΩ)

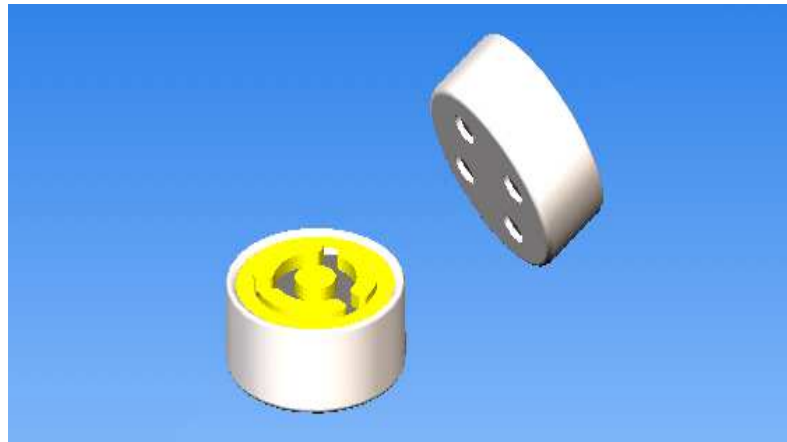


Specifications

Sensitivity:	See above
Standard operation voltage:	2V
Impedance:	Less than 2.2K Ω
Directivity:	Omnidirectional
Current reduction:	Max. 0.5mA
Sensitivity reduction:	Within 3dB at 1.5V
S/N ratio:	More than 55dB
Maximum input sound level:	110dB SPL

TSS-4012E

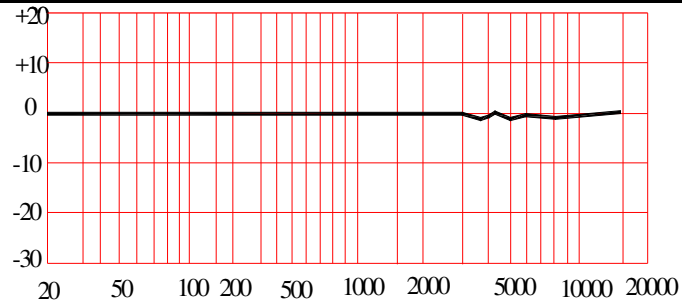
Omnidirectional Back Electret Condenser Microphone



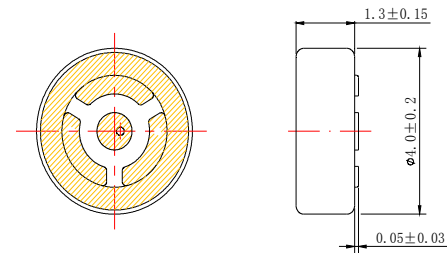
Sensitivity(1KHZ,0dB=1V/Pa)

X:-46±3dB
Y:-44±3dB
Z:-42±3dB

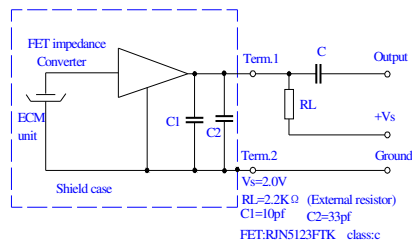
Frequency Response Curve



Dimensional(mm)



Schematic Diagram(Vs=2.0,RL=2.2k Ω)



Specifications

Sensitivity:	See above
Standard operation voltage:	2V
Impedance:	Less than 2.2K Ω
Directivity:	Omnidirectional
Current reduction:	Max. 0.5mA
Sensitivity reduction:	Within 3dB at 1.5V
S/N ratio:	More than 58dB
Maximum input sound level:	110dB SPL