

3 ECM SPEC. as following

ITEM	PARTS NUMBER	DIMENSIONAL	SENSITIVITY		
1	TSB-4015ASC1033Z3-GP	Ø4.0x1.5mm	-42±3dB (OdB=1V/Pa.at 1KHz)	2.0V	2.2KΩ
2	TSB-6022ASC1033DLC3-GP	Ø6.0x2.2mm	-32±3dB (OdB=1V/Pa.at 1KHz)	2.0V	2.2KΩ
3	TSB-6027A1C1033DLC3-GP	Ø6.0x2.7mm	-32±3dB (OdB=1V/Pa.at 1KHz)	2.0V	2.2KΩ

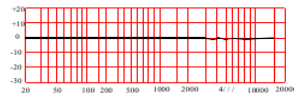
### Omnidirectional Back Electret Condenser Microphone

## TSB-4015A/BP

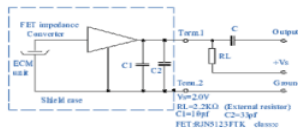
► Sensitivity(1KHZ,OdB=1v/Pa)

X:-46 ± 3dB W:-40± 3dB  
 Y:-44 ± 3dB V:-38 ± 3dB  
 Z:-42 ± 3dB G:-36 ± 3dB

► Frequency Response Curve



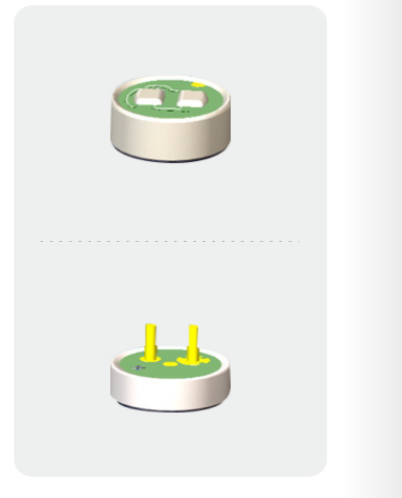
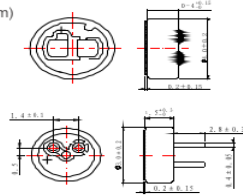
► Schematic Diagram(Vs=2.0,RL=2.2kΩ)



► Specifications

Sensitivity: See above  
 Standard operation voltage: 2V  
 Impedance: Less than 2.2KΩ  
 Directivity: Omnidirectional  
 Current reduction: Max.0.5mA  
 Sensitivity reduction: Within 3dB at 1.5V  
 S/N ratio: More than62dB  
 Maximum input sound level: 110dB SPL

► Dimension(mm)



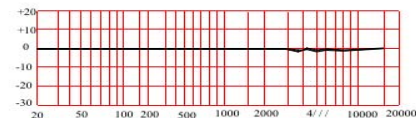
### Omnidirectional Back Electret Condenser Microphone

## TSB-6022A/BP

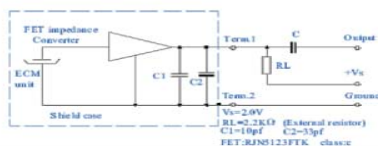
► Sensitivity(1KHZ,OdB=1v/Pa)

X:-44 ± 3dB V:-38 ± 3dB  
 Y:-42 ± 3dB G:-36 ± 3dB  
 Z:-40 ± 3dB C:-32 ± 3dB

► Frequency Response Curve



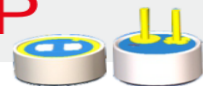
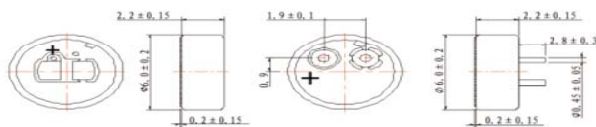
► Schematic Diagram(Vs=2.0,RL=2.2kΩ)



► Specifications

Sensitivity: See above  
 Standard operation voltage: 2V  
 Impedance: Less than 2.2KΩ  
 Directivity: Omnidirectional  
 Current reduction: Max.0.5mA  
 Sensitivity reduction: Within 3dB at 1.5V  
 S/N ratio: More than58dB  
 Maximum input sound level: 110dB SPL

► Dimension(mm)



► Sensitivity(1KHZ,OdB=1v/Pa)

X:-44 ± 3dB V:-38 ± 3dB  
 Y:-42 ± 3dB G:-36 ± 3dB  
 Z:-40 ± 3dB C:-32 ± 3dB

► Specifications

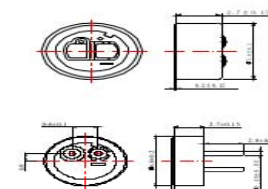
Sensitivity: See above  
 Standard operation voltage: 2V  
 Impedance: Less than 2.2KΩ  
 Directivity: Omnidirectional  
 Current reduction: Max.0.5mA  
 Sensitivity reduction: Within 3dB at 1.5V  
 S/N ratio: More than70dB  
 Maximum input sound level: 110dB SPL

## TSB-6027A/BP

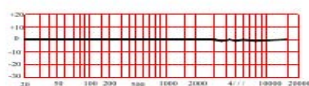
### Omnidirectional Back Electret Condenser Microphone



► Dimension(mm)



► Frequency Response Curve



► Schematic Diagram(Vs=2.0,RL=2.2kΩ)

